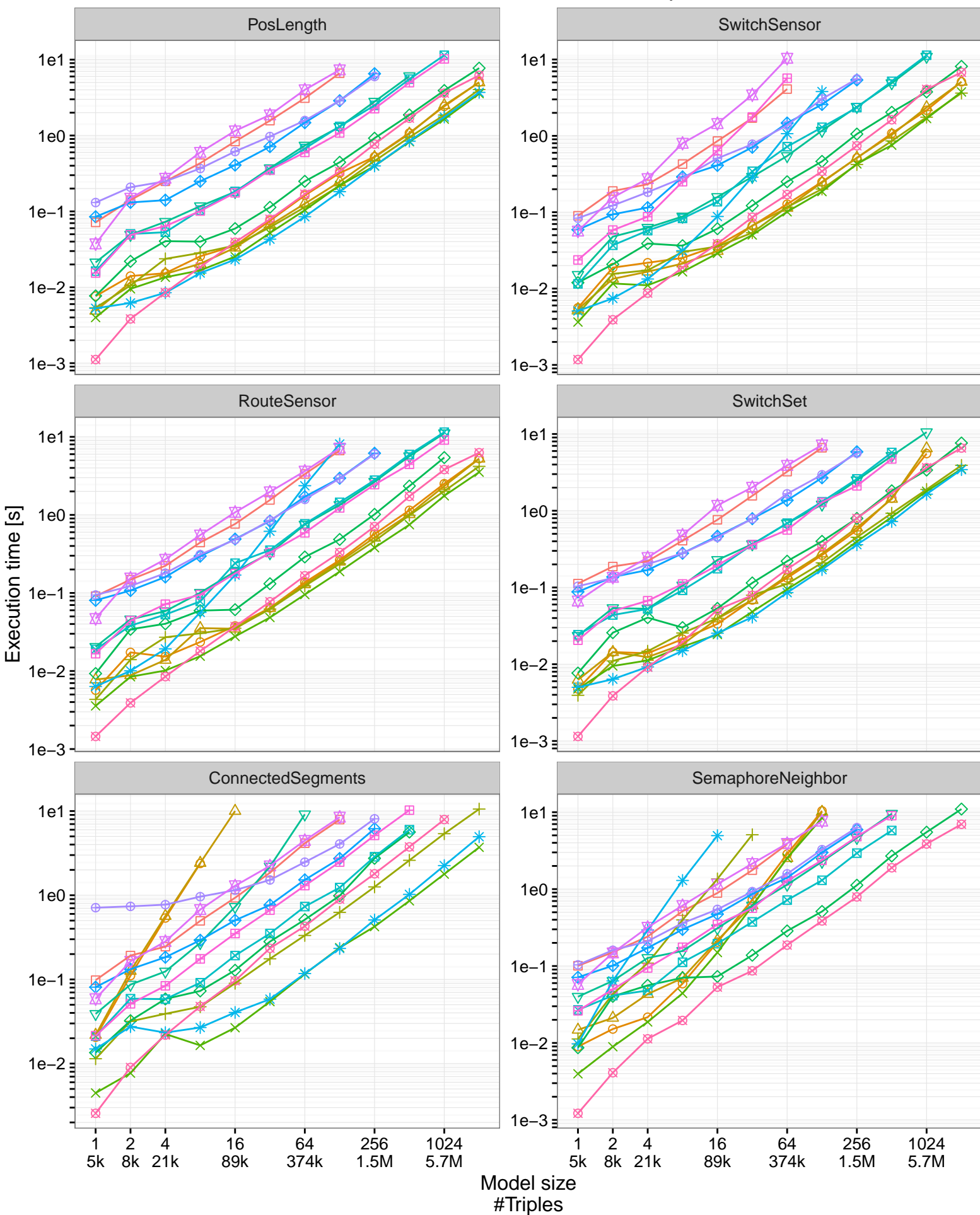


# Batch scenario Read and Check phase



- ▣ Blazegraph (No Inferencing)
- ✕ EMF API
- ✱ MySQL
- ▣ Sesame (No Inferencing)
- Drools5
- ◇ EMF-IncQuery
- ◇ Neo4j (Core API)
- ✕ SQLite
- △ Drools6
- ▽ Jena (Inferencing)
- Neo4j (Cypher)
- ▣ Jena (No Inferencing)
- ✱ Sesame (Inferencing)
- + Eclipse OCL